

IntraGen™

Technical Specification

Applied Frequency	IntraGen : 6Mhz
RF Output Mode	Monopolar
RF Energy per Level	Cut Mode : 5Watt ~ 200Watt Coag Mode : T Level ~ 7Level
Cut Mode	ON TIME : 0s ~ 2.0s (0.01s unit) OFF TIME : 0s ~ 2.0s (0.01s unit) Number Of Pulses : 1 ~ 4 Watt : 5W ~ 200W (1W Unit)
Small Tip	7mm X 7mm (0.32cm ²)
Full Tip	15mm X 15mm (1.69cm ²)
Output Switch	Handpiece Switch or Foot Switch

System Specification

Weight	28Kg
Dimensions	370mm x 450mm x 810mm (including stand 1,240mm)
Handpiece Hose Length	2.3M
Power Consumption	90V ~ 240V (Free Voltage), 600VA



Jeisys



IntraGen™

Jeisys



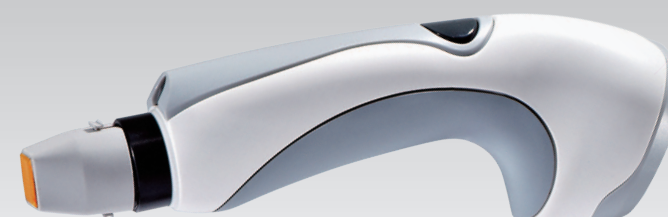
The IntraGen system includes a 6MHz generator that delivers RF energy through a sophisticated treatment tip. The IntraGen tip at the end of the IntraGen handpiece treats on selected epidermal area. Grid fractional radio frequency energy creates thermal grid shapes on epidermis and thermal uniform zone in upper dermis during RF emission.

GFR™ Technology

Grid Fractional Radio frequency™

*More patients are satisfied by
the real beauty of IntraGen*

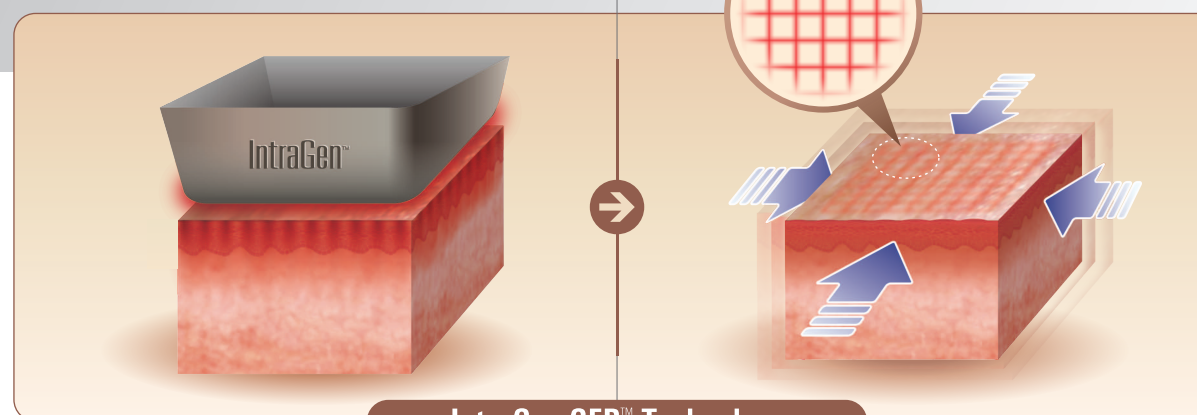
IntraGen™



Effective
use of
GFR™ pulse

Real time Impedance Feedback System

- Consistent energy emission to heat up dermal area
- Constant and reliable treatment in any impedance value



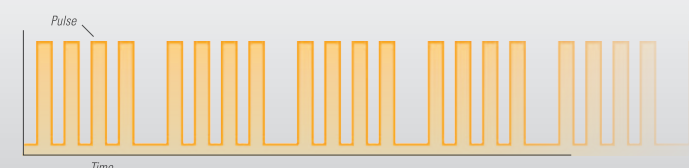
IntraGen GFR™ Technology



IntraGen Treatment Tip

- IntraGen provides various treatment from a very shallow or very small treatment area to a very large or deep treatment area.
- Each IntraGen Tip is sterilized.
- IntraGen tip set is equipped with RF card and tip. Each set is composed the most optimized parameter for the highest performance.

IntraGen Pulse Mode



IntraGen Indication

- / Lifting • Tightening
- / Skin toning • texturing
- / Nasolabial Fold
- / Large pore
- / Chin line
- / Acne

